



Wellington Road, Dartford, DA1 3EH
Guide price £325,000 - £350,000 Freehold

 2  1  1  D

Guide Price £325,000 - £350,000. The Homes Group are delighted to offer to the market this beautifully presented two double bedroom Victorian style house located in a popular road in West Dartford within close proximity of Dartford Grammar Schools and West Dartford Primary Schools.

The accommodation comprises of a 21'3 x 12' living/dining room, an 11'8 x 6'1 kitchen, a ground floor bathroom and two double bedrooms on the first floor.

To the rear is a 40' garden with artificial grass and a garden shed.

Living & Dining Room

21'3 x 12' (6.48m x 3.66m)

Kitchen

11'8 x 6'1 (3.56m x 1.85m)

Ground Floor Bathroom

7'3 x 6'1 (2.21m x 1.85m)

Landing

Bedroom One

11'10 x 10'5 (3.61m x 3.18m)

Bedroom Two

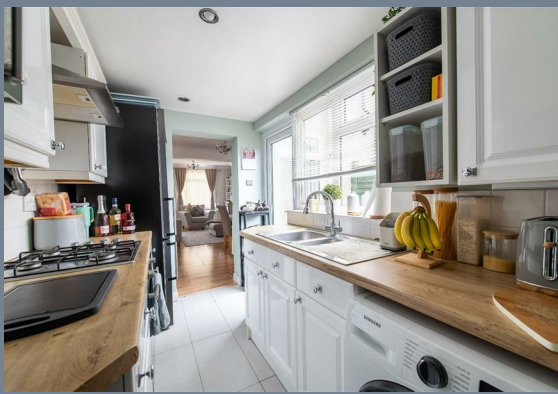
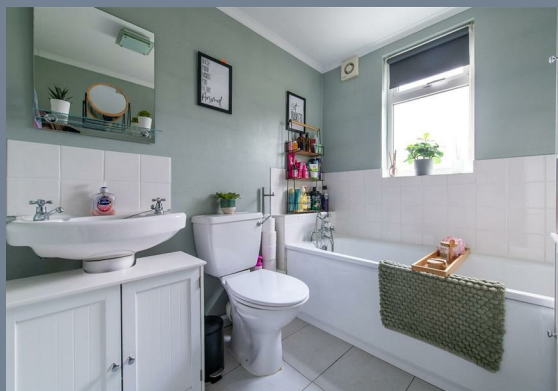
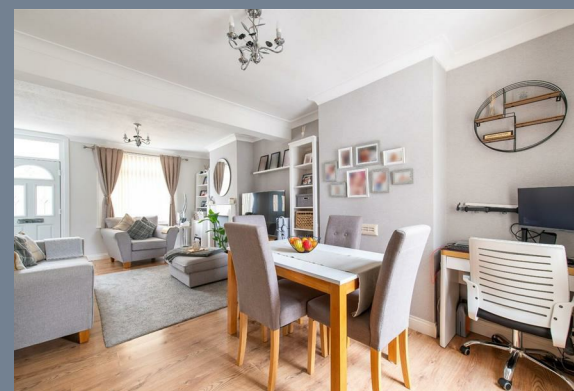
10'5 x 9'5 (3.18m x 2.87m)

Rear Garden

40' (12.19m)

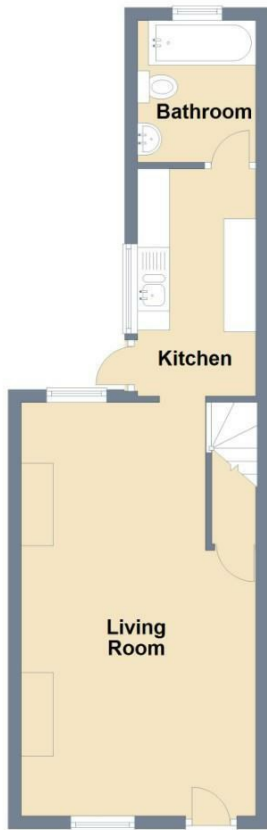
Tenure - Freehold

Council Tax - Band C





Ground Floor
Approx. 34.8 sq. metres (374.2 sq. feet)



First Floor
Approx. 23.7 sq. metres (255.4 sq. feet)



Total area: approx. 58.5 sq. metres (629.6 sq. feet)



Energy Efficiency Rating		Current	Potential
Very energy efficient - lower running costs			
(92 plus) A			89
(81-91) B			
(69-80) C		68	
(55-68) D			
(39-54) E			
(21-38) F			
(1-20) G			
Not energy efficient - higher running costs			
England & Wales		EU Directive 2002/91/EC	

Viewing

Please contact The Homes Group Office on 01322 875000 if you wish to arrange a viewing appointment for this property or require further information.

These particulars, whilst believed to be accurate are set out as a general outline only for guidance and do not constitute any part of an offer or contract. Intending purchasers should not rely on them as statements of representation of fact, but must satisfy themselves by inspection or otherwise as to their accuracy. No person in this firm's employment has the authority to make or give any representation or warranty in respect of the property.